



Building Plot at Cranmore View, Frome, Somerset, BA11 4DT

Individual building plot in an established residential area. Consent for a 3 bedroom detached house with GIA about 1,119ft (104m) on a corner plot with ample parking.

- For Sale By Online Auction
- Thursday 8th December 2022
- Lot 20
- Guide Price £65,000+
- Building Plot
- Consent for 3 bedroom house

Auction Guide £65,000



LOT 20
FOR SALE BY ONLINE AUCTION
THURSDAY 8TH DECEMBER
GUIDE PRICE £65,000+

Individual building plot in an established residential area. Consent for a 3 bedroom detached house with GIA about 1,119ft² (104m²) on a corner plot with ample parking.

Situation & Description

Individual building plot in an established residential area with consent for a 3 bedroom detached house with GIA about 1,119ft² (104m²) with ample parking.

Frome is a historic market town, just under 13 miles from Bath and surrounded by beautiful countryside. The town has many amenities, including good schools, two theatres, a cinema, and a station with rail links to Bath, Bristol and London Paddington.

Planning consent was granted by Mendip District Council under Application No 2022/1319/FUL on 31st August 2022 to demolish some of the garages and erect a 3 bedroom detached house.

The approved plans comprise on the ground floor; entrance hall, open plan living/dining room with kitchen and a cloakroom. On the first floor; landing, a master bedroom with en-suite, 2 bedrooms and a bathroom. Front and rear gardens and parking for 3 cars.

What3Words ///craft.oasis.goods

From Marston Road turn into Cranmore View and bear left at the green. The plot is on the left and previously formed part of the garden of No 27 and 8 garages.

Legal Pack

You can download the legal packs via our website www.strakers.co.uk and going to the auction home page by using the services heading at the top of the page. Click on the light blue tab under the next auction date displayed on the calendar. This will produce a lot list, select a lot of interest, this pulls up further details on the property - on the right under the photos click View Legal Documents - You will need to sign-up by entering your email address and creating a password the first time but this will stay valid for all of our future auctions. The legal pack may not be available straight away, but as long as you have registered to receive it you will be notified as soon as it is available.

Reserve & Guide Price

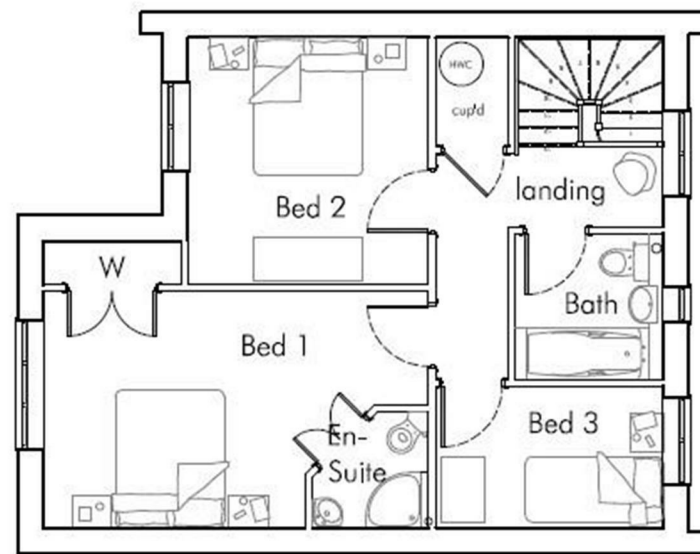
Generally speaking Guide Prices are provided as an indication of each seller's minimum expectation. They are not necessarily figures which a property will sell for and may change at any time prior to the auction. Virtually every property will be offered subject to a Reserve (a figure below which the Auctioneer cannot sell the property during the auction) which we expect will be set within the Guide Range or no more than 10% above a single figure Guide.

+ Fees

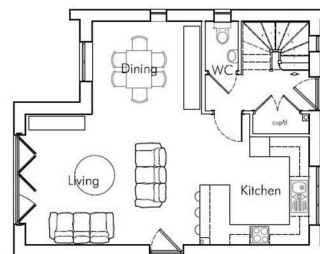
If you are the successful bidder, you will then be asked to sign the auction contract and pay a 10% deposit and a buyers fee of £600 including VAT on any Lots purchased at or below £99,999 or £1,200 including VAT on any lots purchased at £100,000 or above.

Disclaimer

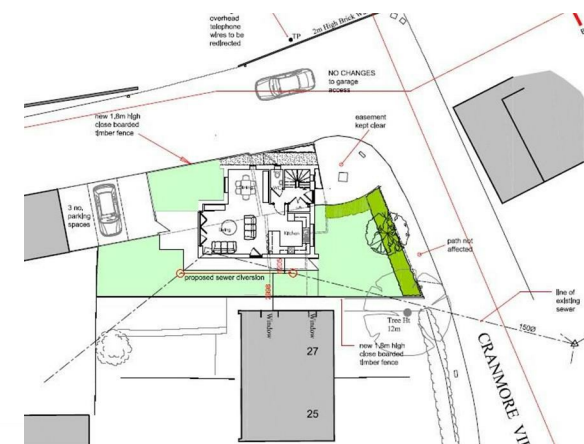
These particulars, whilst believed to be accurate are set out as a general outline only for guidance and do not constitute any part of an offer or contract. Intending purchasers should not rely on them as statements of representation of fact, but must satisfy themselves by inspection or otherwise as to their accuracy. No person in this firm's employment has the authority to make or give any representation or warranty in respect of the property. All measurements and distances are approximate only. Your home is at risk if you do not keep up repayments on a mortgage or other loan secured on it.



FIRST FLOOR PLAN



GROUND FLOOR PLAN



■ Chippenham

■ Corsham

■ Devizes

■ Malmesbury

■ Auctions

■ Lettings

■ New Homes

■ Professional Dept

<https://www.strakers.co.uk>

Email: auctions@strakers.co.uk

Tel: 01249 765200

Building Plot at Cranmore View, Frome, Somerset, BA11 4DT